

Grundfläche = 1211,33 m<sup>2</sup>  
 Umfang = 220,17 m

Querschnitt

Querschnitt

Hauptgang

TOR

TOR

TOR

TOR



Grundfläche = 368,96 m<sup>2</sup>  
 Umfang = 88,28 m

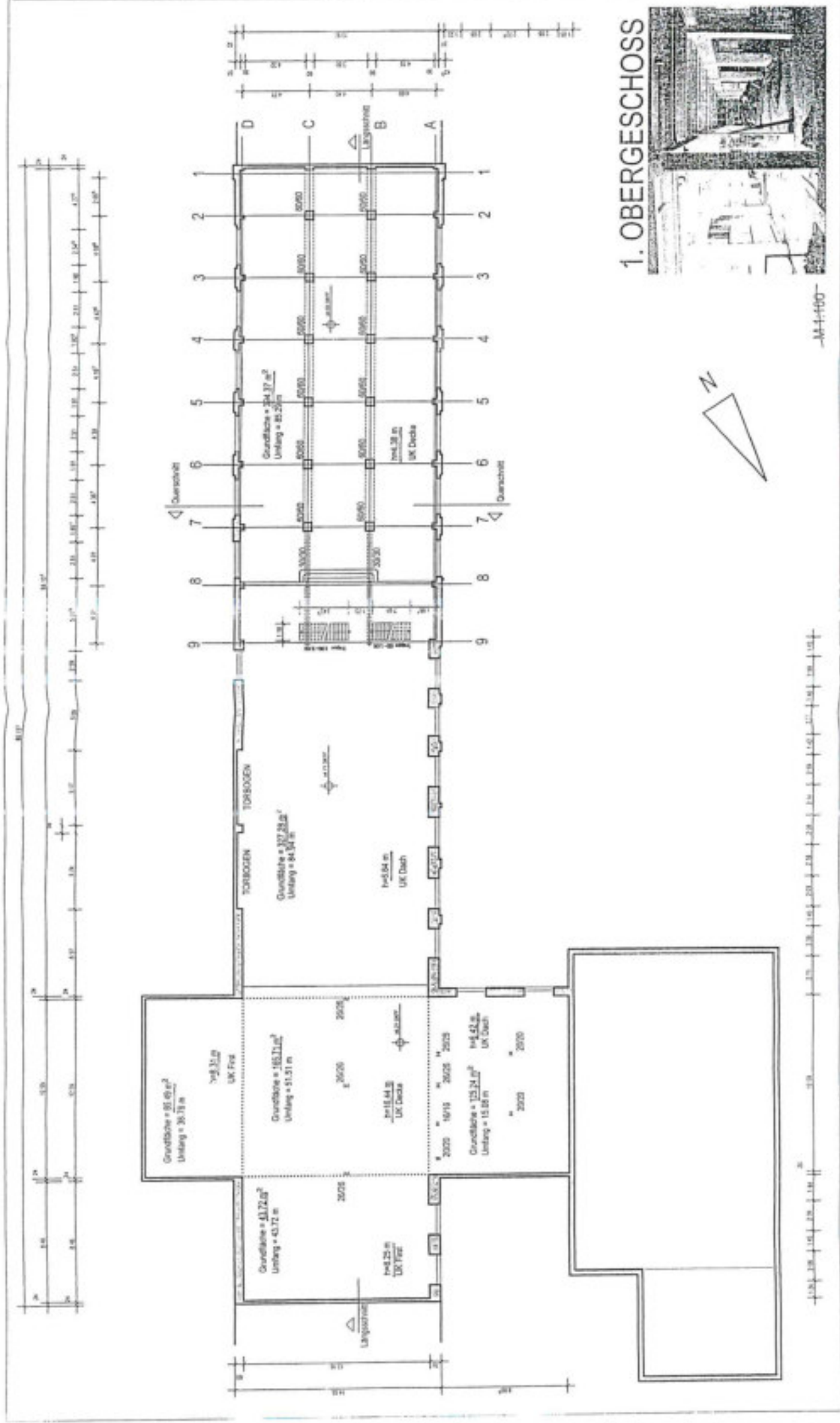
*Handwritten note:* 2. Etage

# ERDGESCHOSS



M 1:250  
 M 1:100

LORENS



# 1. OBERGESCHOSS

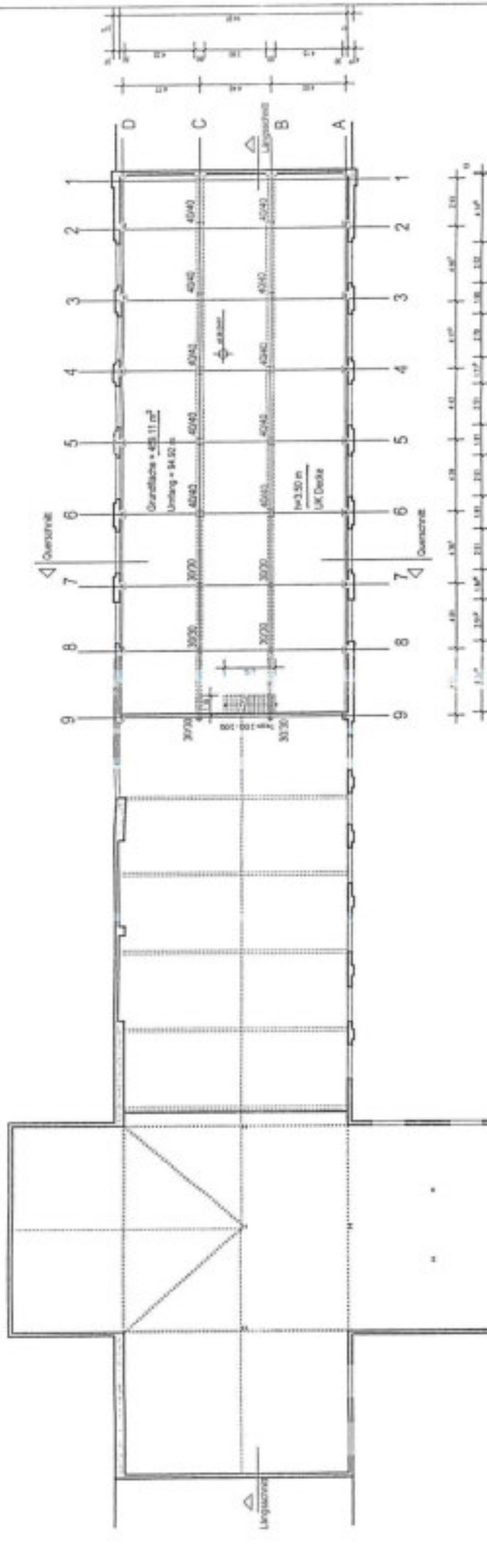
-M 1:100-



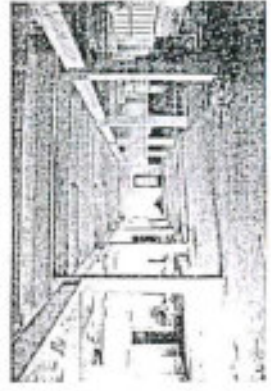
**Room 1 (Top Left):** Grundfläche = 81,49 m<sup>2</sup>, Umfang = 38,38 m. UK First, h=2,35 m.   
 **Room 2 (Top Middle):** Grundfläche = 165,71 m<sup>2</sup>, Umfang = 51,51 m. UK Decke, h=2,40 m.   
 **Room 3 (Top Right):** Grundfläche = 123,24 m<sup>2</sup>, Umfang = 43,59 m. UK Dach, h=4,52 m.   
 **Room 4 (Bottom Middle):** Grundfläche = 165,71 m<sup>2</sup>, Umfang = 51,51 m. UK Dach, h=8,04 m.   
 **Room 5 (Bottom Left):** Grundfläche = 41,72 m<sup>2</sup>, Umfang = 43,72 m. UK First, h=2,25 m.   
 **Room 6 (Bottom Right):** Grundfläche = 11,72 m<sup>2</sup>, Umfang = 22,02 m. UK First, h=2,25 m.

**Room 7 (Middle Left):** Grundfläche = 202,38 m<sup>2</sup>, Umfang = 64,94 m. UK Dach, h=8,04 m.   
 **Room 8 (Middle Right):** Grundfläche = 24,17 m<sup>2</sup>, Umfang = 16,25 m. UK Decke, h=4,28 m.   
 **Room 9 (Right Edge):** Grundfläche = 202,38 m<sup>2</sup>, Umfang = 64,94 m. UK Dach, h=8,04 m.   
 **Room 10 (Far Right):** Grundfläche = 202,38 m<sup>2</sup>, Umfang = 64,94 m. UK Dach, h=8,04 m.

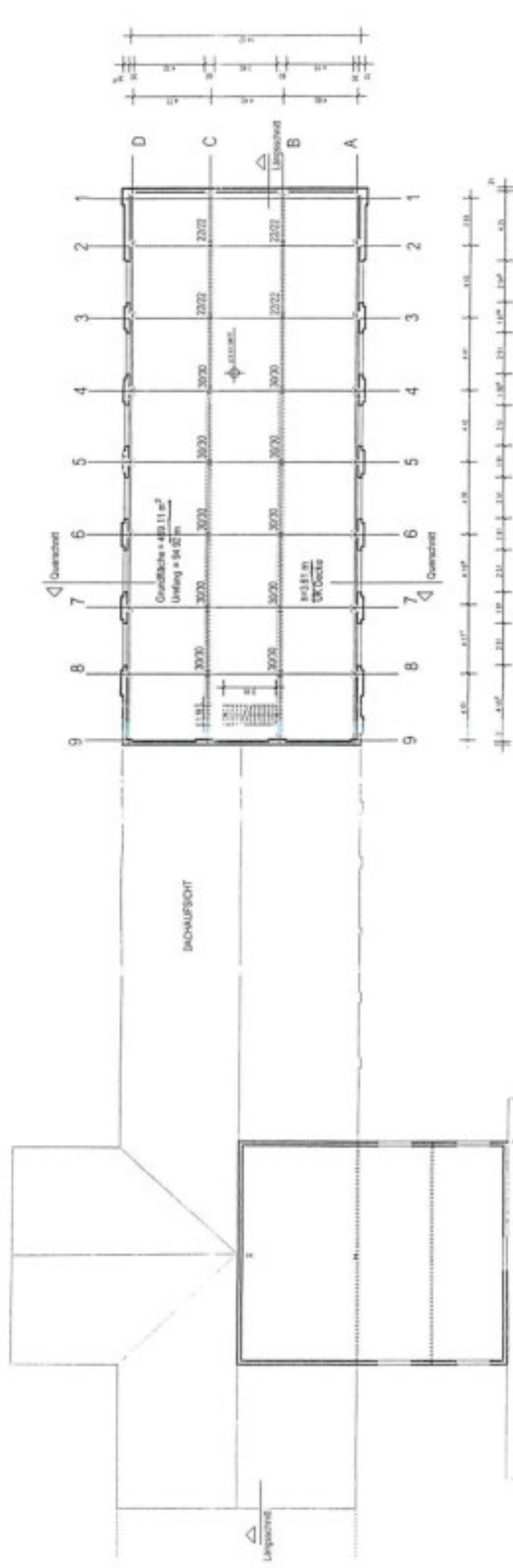




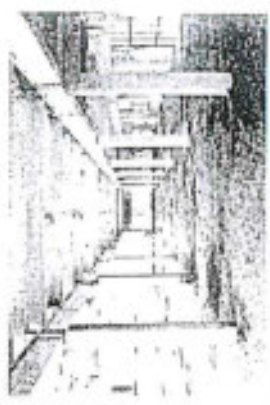
## 2. OBERGESCHOSS



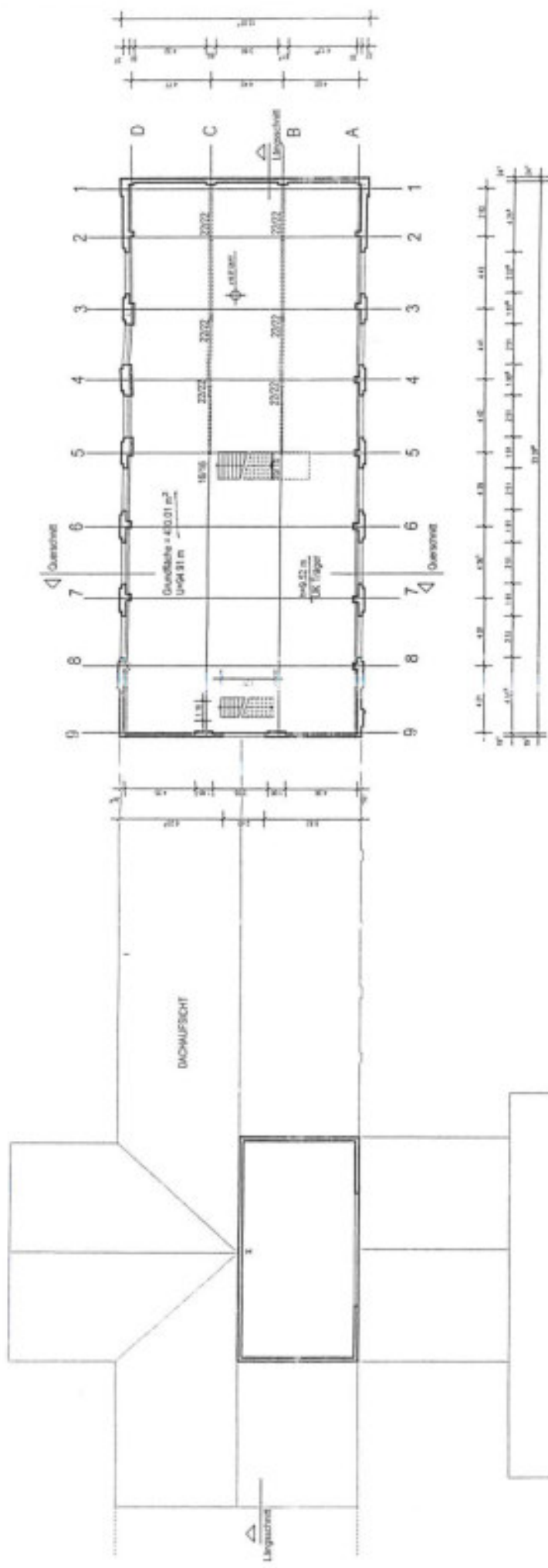
-M.1-100-



### 3. OBERGESCHOSS



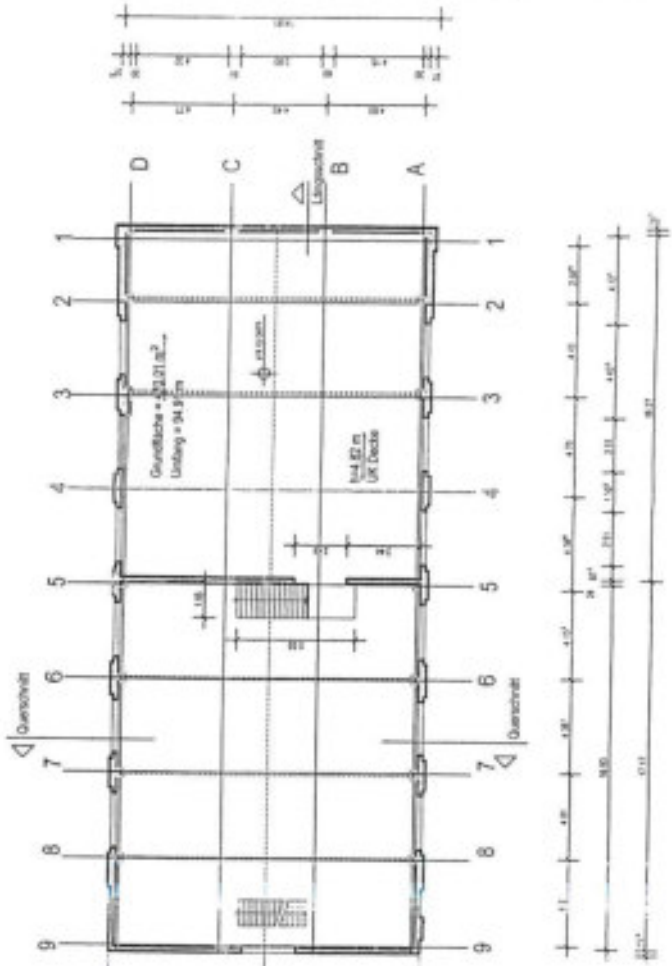
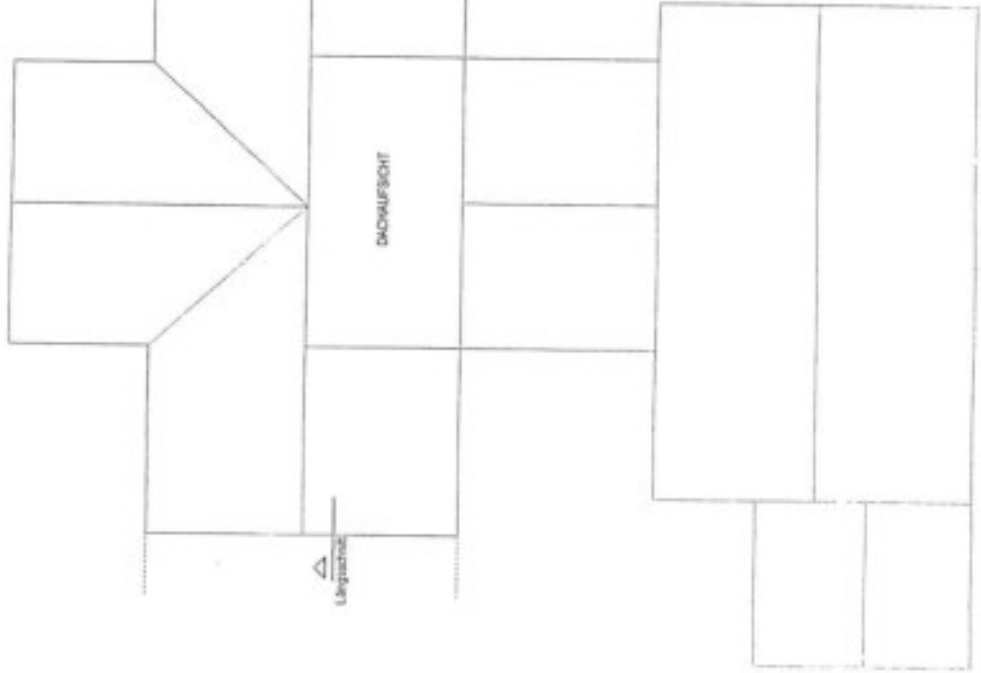
Nr. 4-100



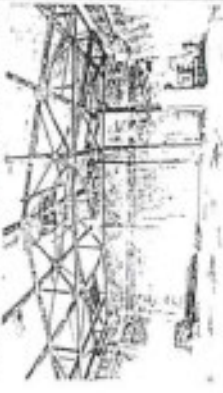
#### 4. OBERGESCHOSS



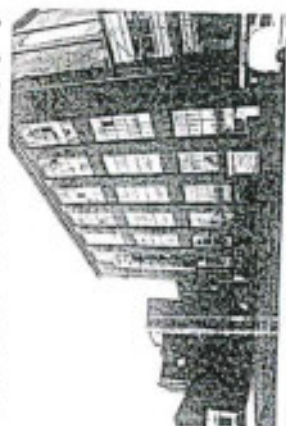
-M 4-100



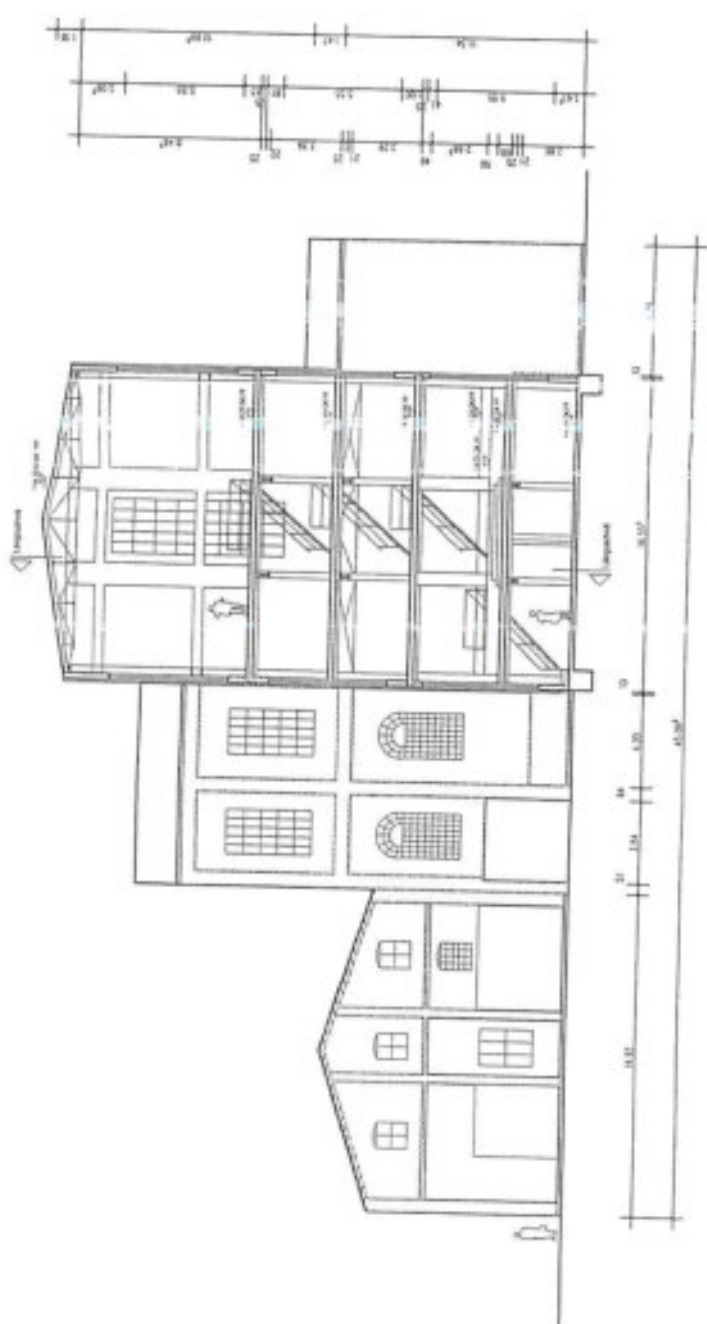
# 5. OBERGESCHOSS

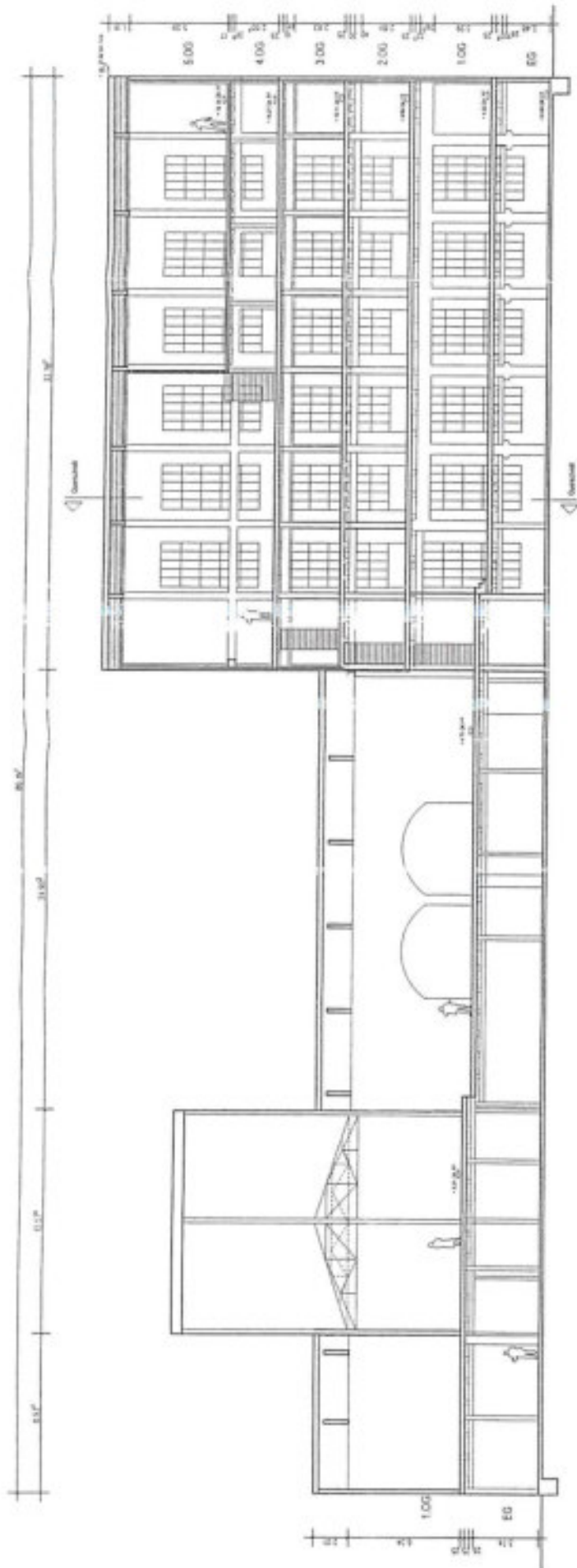


M 1-100



# QUERSCHNITT





LÄNGSSCHNITT

